

# DCFC ADVENTURE NETWORK



520 South Main Street, Suite 2531  
Akron, OH 44311  
330.572.2100 Fax 330.572.2101



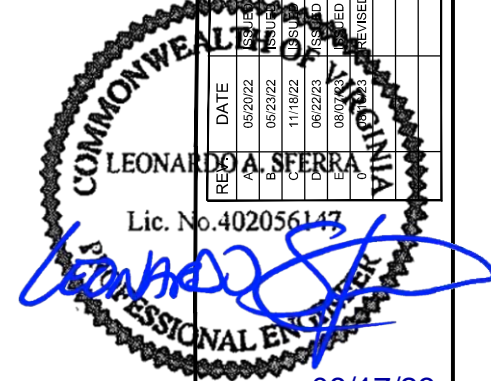
PROJECT INFORMATION	
SITE ADDRESS	1961 CHAIN BRIDGE RD TYSONS, VA 22102 38.916517°, -77.221318°
UTILITY NAME	DOMINION ENERGY
UTILITY ADDRESS	101 ELDEN STREET HERNDON, VA 20170
UTILITY CONTACT INFORMATION	MICHEAL FRYE CUSTOMER PROJECT DESIGNER I THOMAS.M.FRYE@DOMINIONENERGY.COM (571) 271-6585
RIVIAN DEPLOYMENT MANAGER CONTACT INFORMATION	SETH KENNEY SETHKENNEY@RIVIAN.COM (617) 417-5933
RIVIAN REAL ESTATE MANAGER CONTACT INFORMATION	BENJAMIN SMITH BENJAMINSMITH@RIVIAN.COM (203) 644-7078
CIVIL ENGINEER OF RECORD (EOR)	LAS
ELECTRICAL EOR	SPS
EOR ADDRESS	520 S MAIN STREET AKRON, OHIO 44311
EOR CONTACT INFORMATION	(330) 572-2100
APN #	123456
COUNTY	FAIRFAX
PROPERTY OWNER	THE MACERICH COMPANY
PROPERTY OWNER CONTACT	CHRIS PERRY CHRIS.PERRY@MACERICH.COM
AHJ CONTACT INFORMATION	CITY OF TYSONS TBD



SHEET INDEX		
SHEET	CIVIL SHEET NAME	REV
C-001	COVER SHEET	0
	TOPOGRAPHIC SURVEY (BY OTHERS)	
	RIVIAN EQUIPMENT SPEC SHEET	
C-002	CIVIL CONSTRUCTION NOTES	0
C-003	CIVIL CONSTRUCTION NOTES	0
C-004	CIVIL CONSTRUCTION NOTES	0
C-100	OVERALL SITE PLAN	0
C-101	EXISTING CONDITIONS AND DEMOLITION PLAN	0
C-111	CIVIL SITE PLAN	0
C-112	DIMENSION SITE PLAN	0
C-113	GRADING PLAN	0
C-114	ELEVATION PLAN	0
C-201	CIVIL DETAILS	0
C-202	CIVIL DETAILS	0
C-203	CIVIL DETAILS	0
SHEET	STRUCTURAL SHEET NAME	REV
S-001	RETAINING WALL GENERAL NOTES AND SPECIAL INSPECTIONS	0
S-101	RETAINING WALL FOUNDATION PLAN AND SECTIONS	0
SHEET	ELECTRICAL SHEET NAME	REV
E-001	ELECTRICAL GENERAL NOTES	0
E-002	ELECTRICAL GENERAL NOTES	0
E-101	ELECTRICAL SITE PLAN	0
E-201	SINGLE LINE DIAGRAM	0
E-202	PANEL SCHEDULE	0
E-301	ELECTRICAL DETAILS	0

### PLAN REPRODUCTION WARNING

THE PLANS HAVE BEEN PREPARED FOR PRINTING ON ANSI B (11"x17") SHEETS. PRINTING ON OTHER SIZE SHEETS MAY DISTORT SCALES. REFER TO GRAPHIC SCALES.



08/17/23

DCFC ADVENTURE NETWORK  
1961 CHAIN BRIDGE RD  
TYSONS, VA 22102

COVER SHEET

PROJECT MANAGER	DESIGNER
IM	SMG

JOB NO.  
2020264.88

C-001

REV	DATE	DESCRIPTION
A	05/20/22	ISSUED FOR 50% REVIEW
B	05/23/22	REVISED FOR 50% REVIEW
C	11/16/22	ISSUED FOR 50% REVIEW
D	06/22/23	ISSUED FOR 90% REVIEW
E	08/07/23	ISSUED FOR SIGN & SEAL
F	08/17/23	REVISED SIGN & SEAL

**COMMONWEALTH OF VIRGINIA**  
**LEONARDO A. SIERRA**  
Professional Engineer  
No. 402056147  
08/17/23

**DCFC ADVENTURE NETWORK**  
1961 CHAIN BRIDGE RD  
TYSONS, VA 22102

**CIVIL SITE PLAN**

PROJECT MANAGER	DESIGNER
IM	SMG

JOB NO.  
**2020264.88**

**C-111**

**GENERAL SHEET NOTES**

- EXISTING PROPERTY LINES, RIGHT-OF-WAY BOUNDARIES, EASEMENT BOUNDARIES, SETBACKS, AND UTILITIES ARE SHOWN FOR REFERENCE ONLY.
- THE CONTRACTOR SHALL ENSURE EXISTING CURBING AND PAVEMENT IS NOT TO BE DAMAGED ACCESSING WORK AT THE SITE. THE CONTRACTOR SHALL BE RESPONSIBLE TO REPLACE CURBING AND PAVEMENT IF DAMAGED.
- CONTRACTOR SHALL REMOVE EXISTING PAVEMENT AND/OR CURB USING CLEAN SAWCUTS TO INSTALL PROPOSED UNDERGROUND CONDUITS AND REPLACE PAVEMENT AND/OR CURB (SEE DETAIL(S) ON SHEET C-202) AFTER CONDUITS HAVE BEEN INSTALLED. SEE ELECTRICAL SHEETS FOR CONDUIT ROUTING, APPROXIMATE CONDUIT RUN LENGTHS AND TRENCH DETAIL. CONTRACTOR SHALL MEET OR EXCEED EXISTING PAVEMENT SPECIFICATIONS. NOTIFY ENGINEER OF ANY DISCREPANCIES PRIOR TO PERFORMING WORK.
- APPLY LIQUID ASPHALT AT ALL JOINTS BETWEEN CONCRETE AND ASPHALT AND WHERE PROPOSED ASPHALT MEETS EXISTING, INCLUDING SAW CUT JOINTS.

**PLAN KEYNOTES**

- PROPOSED PAD MOUNTED ELECTRICAL UTILITY TRANSFORMER (BY UTILITY). CONTRACTOR SHALL PROVIDE CONCRETE PAD PER UTILITY SPECIFICATIONS. COORDINATE FINAL LOCATION WITH UTILITY.
- PROPOSED UTILITY METER ON H-FRAME.
- PROPOSED SWITCHGEAR PER ELECTRICAL DRAWINGS WITH CTS MOUNTED INTERNALLY PER ELECTRIC COMPANY SPECIFICATIONS AND DETAILS ON ELECTRICAL SHEETS.
- PROPOSED RIVIAN POWER CABINETS (TOTAL OF 3) MOUNTED ON CONCRETE PAD. SEE CIVIL DETAILS.
- FUTURE RIVIAN POWER CABINETS (TOTAL OF 3) MOUNTED ON CONCRETE PAD TO SUPPLY, INSTALL, CAP AND BURY CONDUITS FOR FUTURE POWER CABINET. SHALL DOCUMENT PLACEMENT OF BURIED CONDUITS. SEE CIVIL DETAILS.
- PROPOSED RIVIAN DCFC DISPENSER (TOTAL OF 6) MOUNTED ON INDIVIDUAL FOUNDATIONS BOLTED TO GARAGE FLOOR. SEE CIVIL DETAILS.
- FUTURE RIVIAN DCFC DISPENSER (TOTAL OF 6) MOUNTED ON INDIVIDUAL FOUNDATIONS BOLTED TO GARAGE FLOOR. GC TO CAP CONDUITS FOR FUTURE DISPENSERS. GC SHALL DOCUMENT PLACEMENT OF CONDUITS. SEE CIVIL DETAILS.
- PROPOSED PULL BOX. CONTRACTOR TO SIZE PER NEC.
- PROPOSED NON-ILLUMINATED EV CHARGING SIGN MOUNTED ON WALL (TOTAL OF 6). SEE CIVIL DETAILS.
- FUTURE NON-ILLUMINATED EV CHARGING SIGN MOUNTED ON WALL (TOTAL OF 6). SEE CIVIL DETAILS.
- PROPOSED P.C.C. EQUIPMENT PAD. SEE CIVIL DETAILS.
- PARKING GARAGE BOLT ON BOLLARD (TYPICAL OF 8). SEE CIVIL DETAILS.
- FUTURE PARKING GARAGE BOLT ON BOLLARD (TYPICAL OF 6). SEE CIVIL DETAILS.
- PROPOSED PAINTED 4" WIDE SOLID WHITE STRIPE. SEE PAVEMENT MARKING NOTES ON SHEET C-003.
- PROPOSED PAINTED 4" WIDE TRANSVERSE STRIPING TO MATCH EXISTING COLOR. STRIPING SHALL BE 3'-0" O.C. SEE CIVIL DETAILS.
- ALL DISTURBED AREAS NOT TO BE PAVED SHALL BE SODDED/MULCHED.
- PROPOSED TREX 'SECLUSION' FENCING ON RETAINING WALL. SEE CIVIL DETAILS.
- PROPOSED TREX "SECLUSION" SINGLE GATE WITH KEYPAD AND PANIC HARDWARE. SEE CIVIL DETAILS.
- EXISTING FIRE HYDRANT.
- CONTRACTOR SHALL RELOCATE LIGHT POLE AND LUMINAIRE. REMOVE EXISTING CONCRETE BASE TO DEPTH NECESSARY TO ACCOMMODATE PROPOSED WORK. PROVIDE NEW CONCRETE BASE TO MATCH EXISTING. PROVIDE HANDHOLE AND SPLICE & EXTEND CONDUIT & WIRING TO NEW LOCATION. MATCH SIZE AND MATERIAL. SEE CIVIL DETAILS.
- CONTRACTOR SHALL RELOCATE EXISTING LIGHT CIRCUIT AS REQUIRED. PROVIDE HANDHOLE. SPLICE AND EXTEND CONDUIT AND WIRING TO NEW LOCATION. MATCH SIZE AND MATERIAL.
- PROPOSED LANDSCAPING. (10) TOTAL TAXUS X MEDIA 'HICKSII', HICK'S YEW. TO BE PLANTED AT 4' HT., 25 GAL. SEE SHEET C-003 FOR LANDSCAPE NOTES AND SHEET C-203 FOR PLANTING DETAIL.
- EXISTING SIGN TO BE FIELD RELOCATED.
- PROPOSED WALL DRAINAGE PIPE. CONTRACTOR TO ENSURE POSITIVE DRAINAGE
- CONTRACTOR TO COORDINATE WITH UTILITY ON ADDITIONAL LANDSCAPE REMOVAL TO ENSURE PROPER ACCESS.
- PROPOSED RIP RAP ROCK CHANNEL. CONTRACTOR TO ENSURE POSITIVE DRAINAGE.

**LEGEND**

- (SEE SHEET C-002 FOR GENERAL LEGEND)
- PROPOSED RIVIAN DCFC DISPENSER
  - CONSTRUCTION KEYNOTE

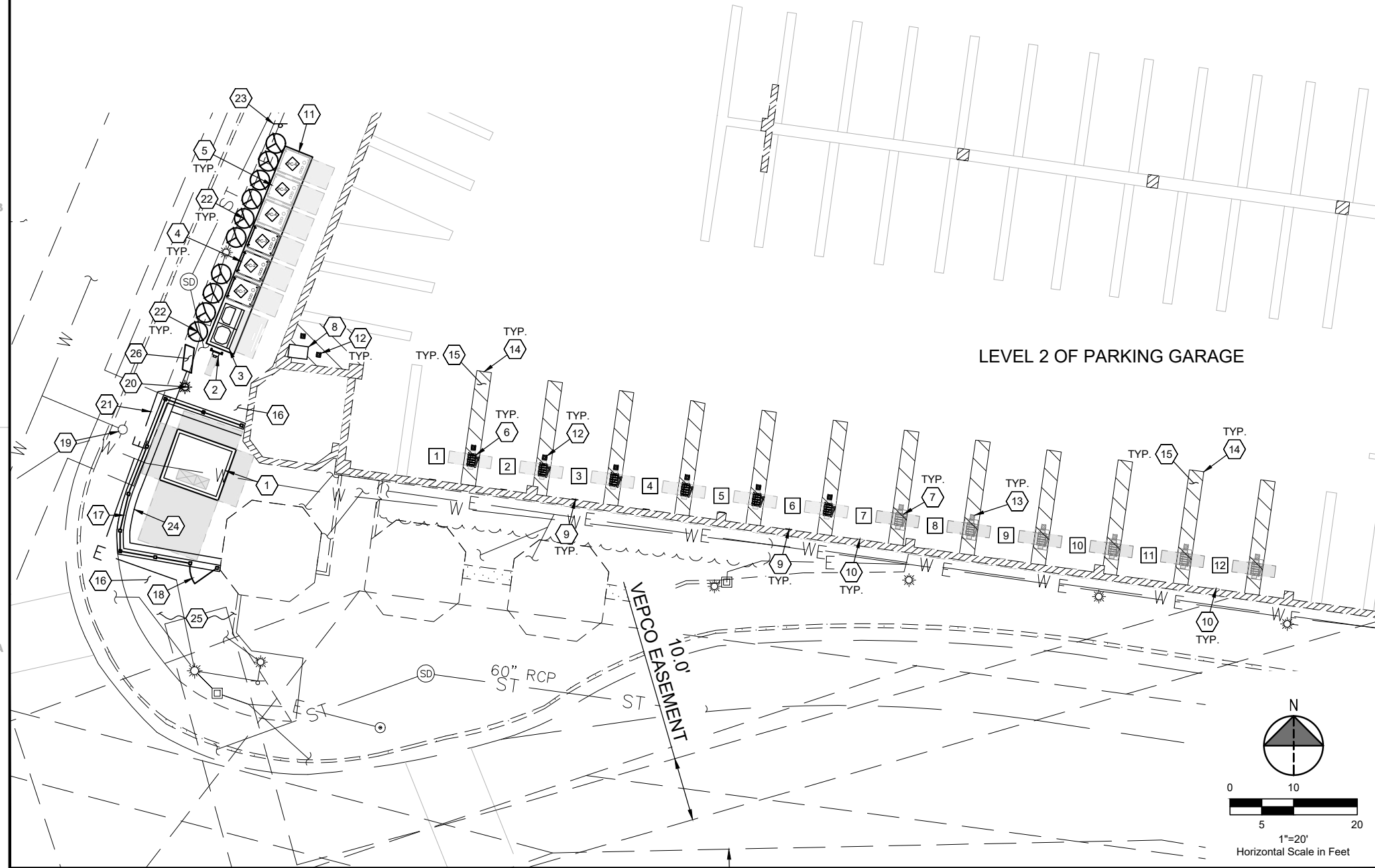
**DISPENSER CIRCUIT SCHEDULE**

POWER CABINET	DISPENSER	DEDICATED/ENABLED
PC-1	1	DEDICATED
	2	DEDICATED
PC-2	3	DEDICATED
	4	DEDICATED
PC-3	5	DEDICATED
	6	DEDICATED
PC-4	7	FUTURE
	8	FUTURE
PC-5	9	FUTURE
	10	FUTURE
PC-6	11	FUTURE
	12	FUTURE

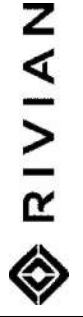
**PARKING STALL SCHEDULE**

EXISTING STANDARD STALLS UTILIZED AS A RESULT OF THIS PROJECT	16
PROPOSED RIVIAN STALLS	6
FUTURE RIVIAN STALLS	6
PROPOSED STANDARD STALLS	0
NET STALL COUNT	-4

**LEVEL 2 OF PARKING GARAGE**



Drawing Name: O:\2020\202026488 - Tysons, VA (Tysons Corner) Parking Garage C:\wgl\202026488 - Tysons, VA - CD90\_recover.dwg  
 August 17, 2023 10:52 AM - S.Guthridge



REVISION	DATE	DESCRIPTION
A	05/20/22	ISSUED FOR 50% REVIEW
B	05/22/22	REVISED FOR 50% REVIEW
C	11/16/22	ISSUED FOR 50% REVIEW
D	06/22/23	ISSUED FOR 90% REVIEW
E	08/07/23	ISSUED FOR SIGN & SEAL
F	08/17/23	REVISED SIGN & SEAL

COMMONWEALTH OF VIRGINIA  
**LEONARDO A. SIERRA**  
 Lic. No. 402056147  
 PROFESSIONAL ENGINEER

08/17/23

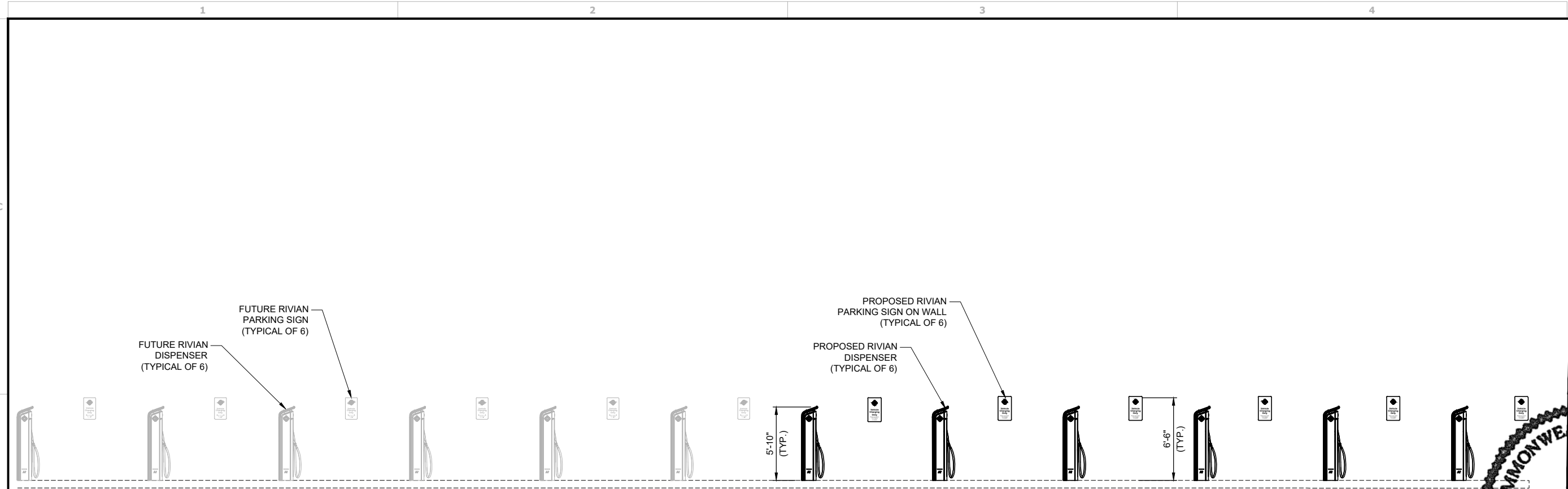
**DCFC ADVENTURE NETWORK**  
 1961 CHAIN BRIDGE RD  
 TYSONS, VA 22102

**ELEVATION PLAN**

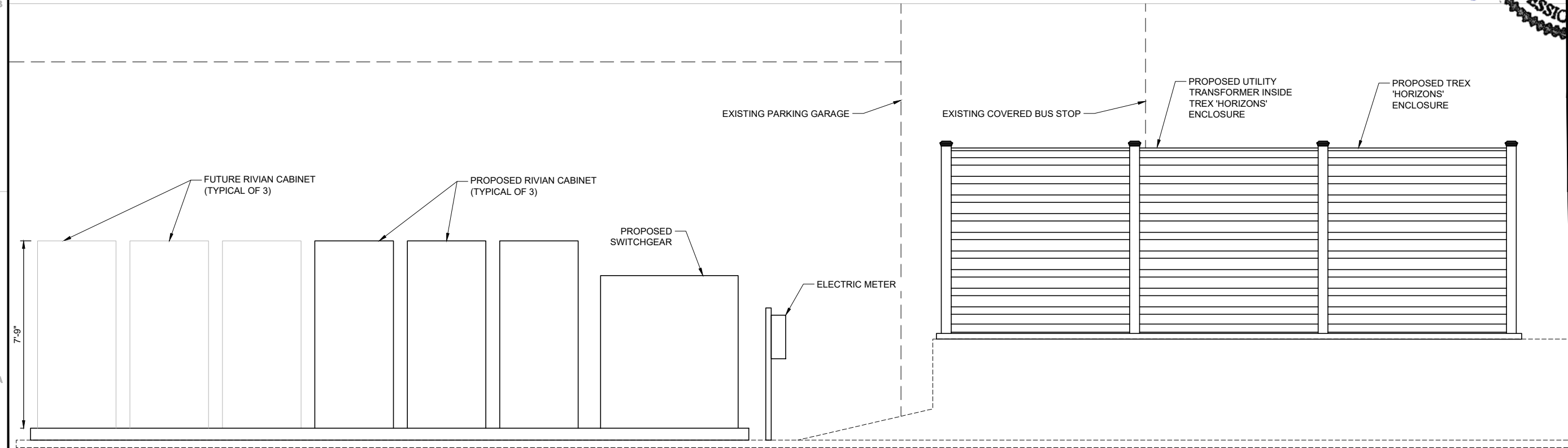
PROJECT MANAGER	DESIGNER
IM	SMG

JOB NO.  
**2020264.88**

**C-114**



**B-1 PROPOSED EQUIPMENT ELEVATION**  
 NTS



**B-2 PROPOSED EQUIPMENT ELEVATION**  
 NTS

Drawing Name: O:\2020\2020264-88 - Tysons, VA (Tysons Corner Parking Garage C)\dwg\2020264-88 - Tysons, VA - CD90\_recover.dwg  
 August 17, 2023 10:52 AM - S.Guthridge