

# Washer, NVH/Ting, Front Halfshaft, LH (Remove and Replace)

Labor Code: 386440010

**Important:**

This manual is written for professional automotive technicians who have received high voltage training. It is the technician's responsibility to make sure that the vehicle is safe to work on before beginning inspections or repairs, and to perform all work in a safe manner and in a safe work environment. Refer to the [Introduction](#) section for additional important information.

**Non-Reusable Component(s):**

Part Number	Quantity
SC00006346-B	1
SC00023721-A	1

**Required Special Tools:**

Tool Number	Tool Name
TSN00536	Ride height torque tool
TSN00546	Axle press
Vehicles with Origin drive unit:	
TSN01096	NVH/Ting washer installation tool, Origin
Vehicles with Enduro drive unit:	
TSN01577	NVH/Ting washer installation kit, Enduro

**Torque Specifications:**

Step Number	Torque (Nm)
<a href="#">6</a>	10
<a href="#">7</a>	128
<a href="#">8.d</a>	120

## Sections

- [Removal](#)
- [Installation, Origin](#)
- [Installation, Enduro](#)

## Removal

**Note:**

Origin halfshaft shown, Enduro halfshaft similar.

**Warning:**

Using RiDE to depressurize the air suspension system may leave up to 3 bar (44 PSI) in various components or in independently sealed areas of the system. Loosen all air hose fittings slowly, even if other fittings have already been loosened or removed.

**CAUTION:**

If the air suspension system is depressurized, do not allow the vehicle to rest on its own weight until the air springs have been re-filled.

- [Raise and Support Vehicle.](#)
- Using RiDE: Depressurize the air suspension.

**CAUTION:**

Do not lower the vehicle until the air springs have been re-filled.

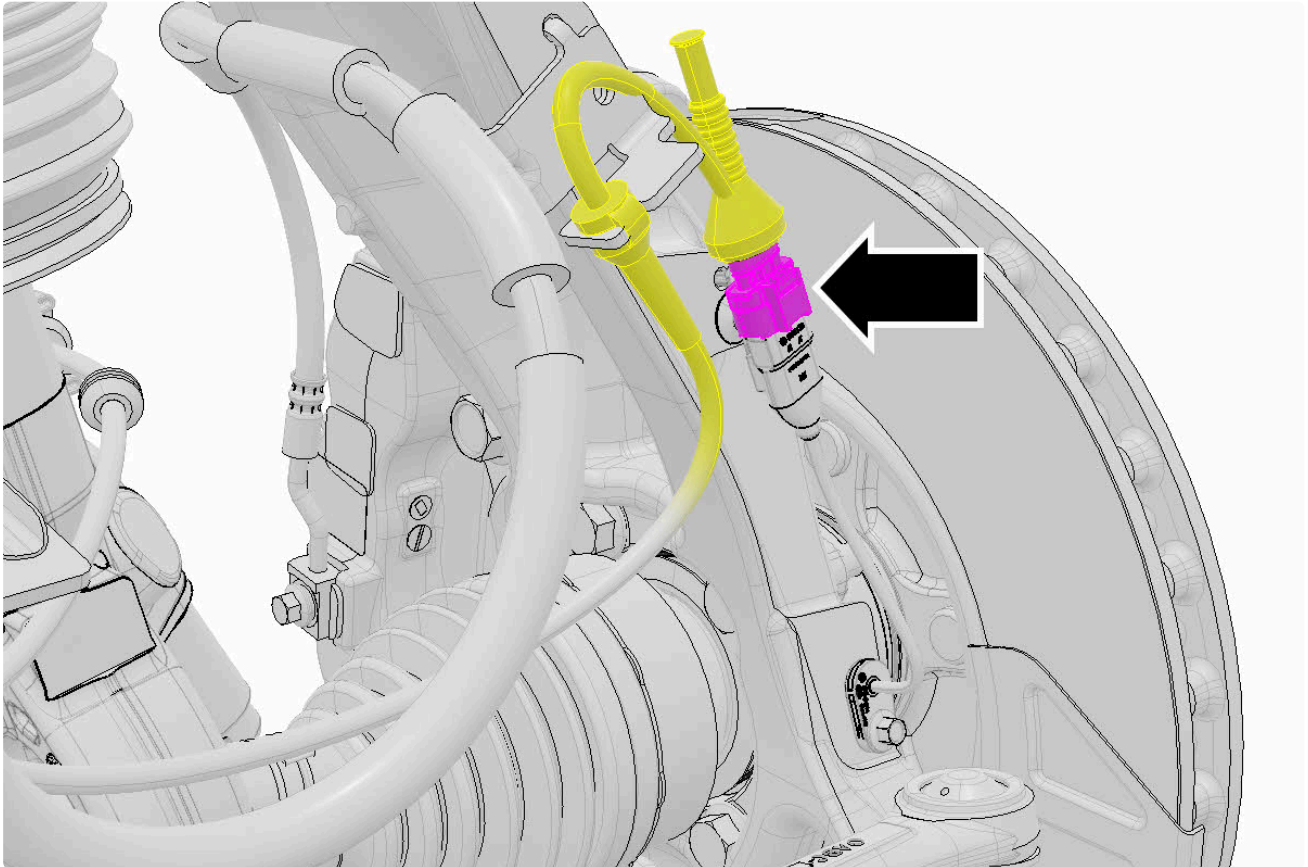
- Using RiDE: Depressurize the hydraulic suspension.

**CAUTION:**

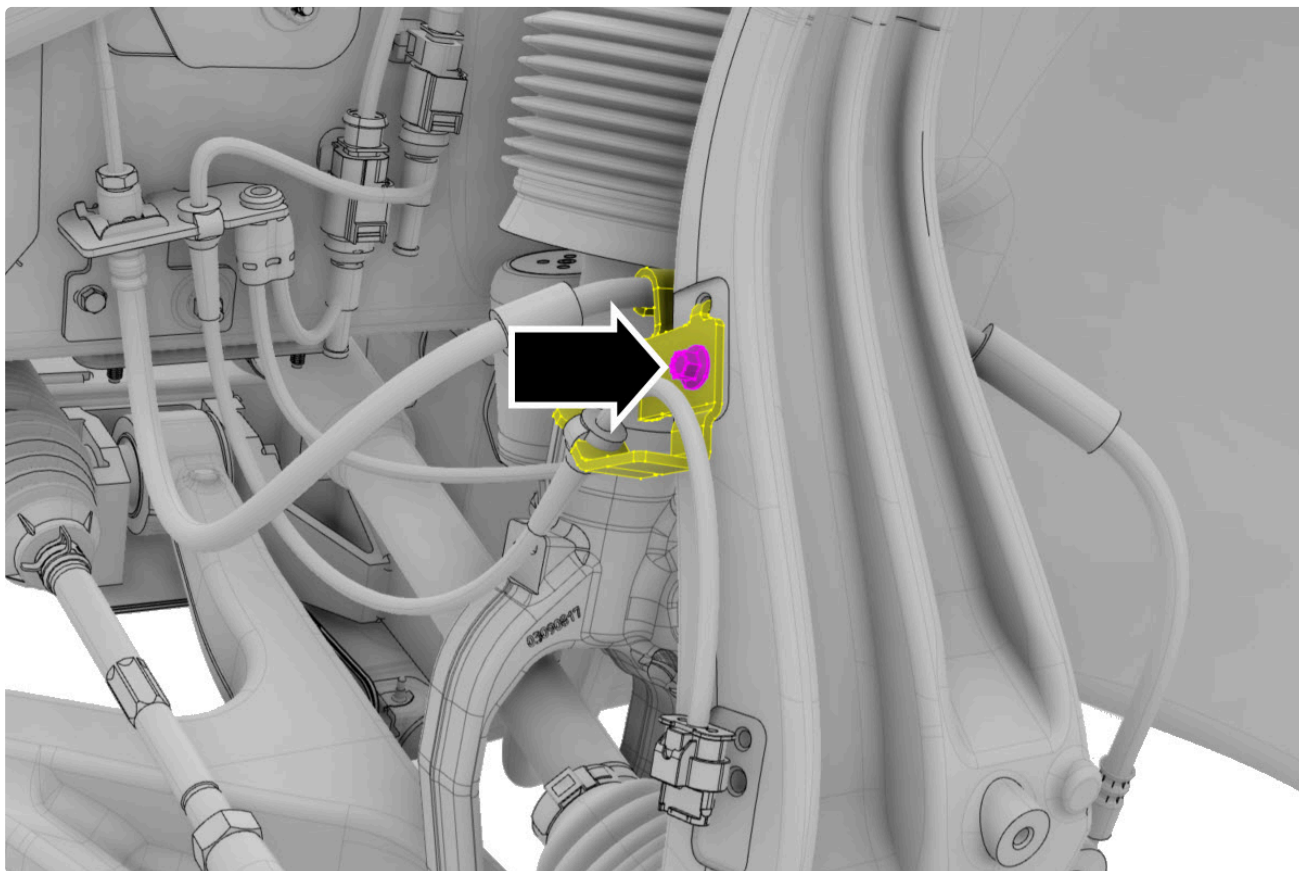
Do not lower the vehicle until the hydraulic suspension has been re-pressurized.

- Remove: [Wheel and Tire Assembly, Front, LH \(Remove and Reinstall\)](#).

- 

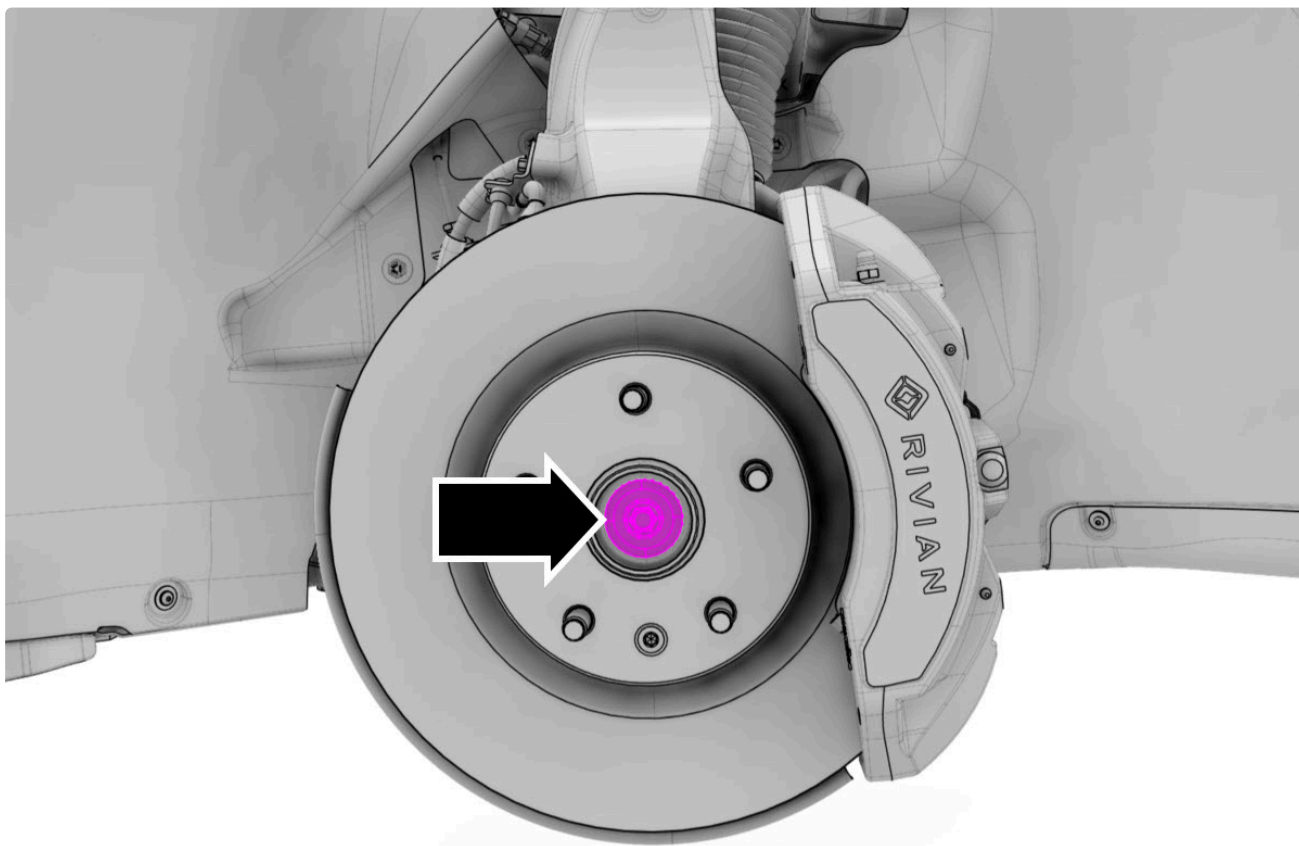


6.



Torque: 10 Nm

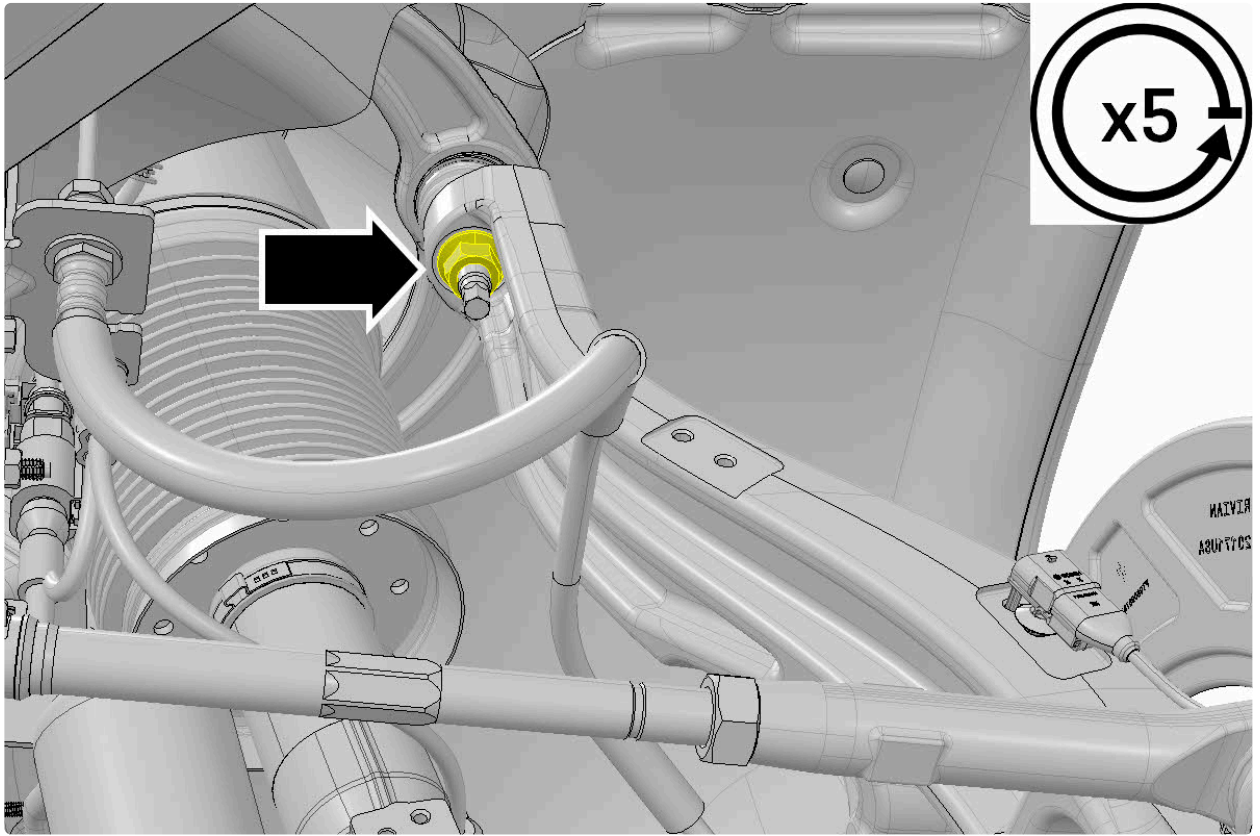
7.



**CAUTION:**  
Non-reusable fastener(s).

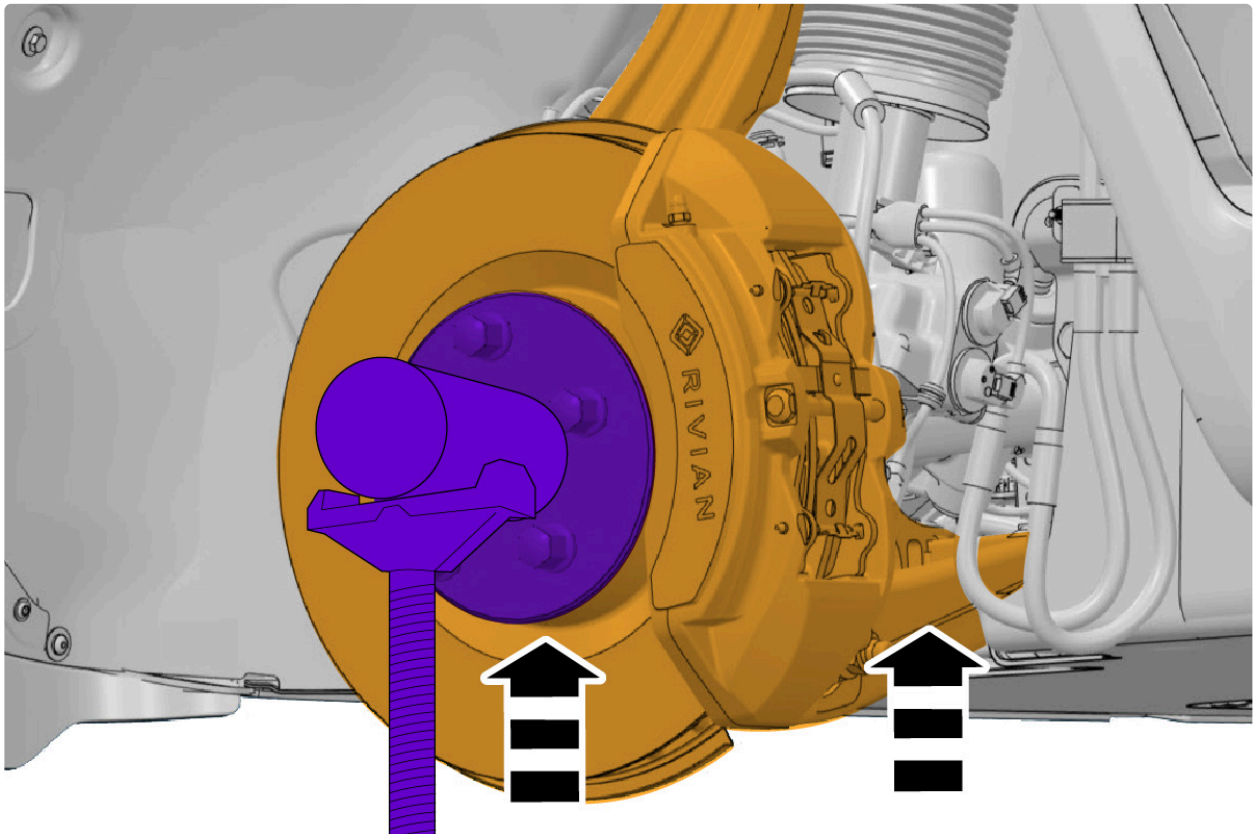
Torque: 128 Nm

8. a.



**Tip:**  
If available: Use the pass-through socket wrench.

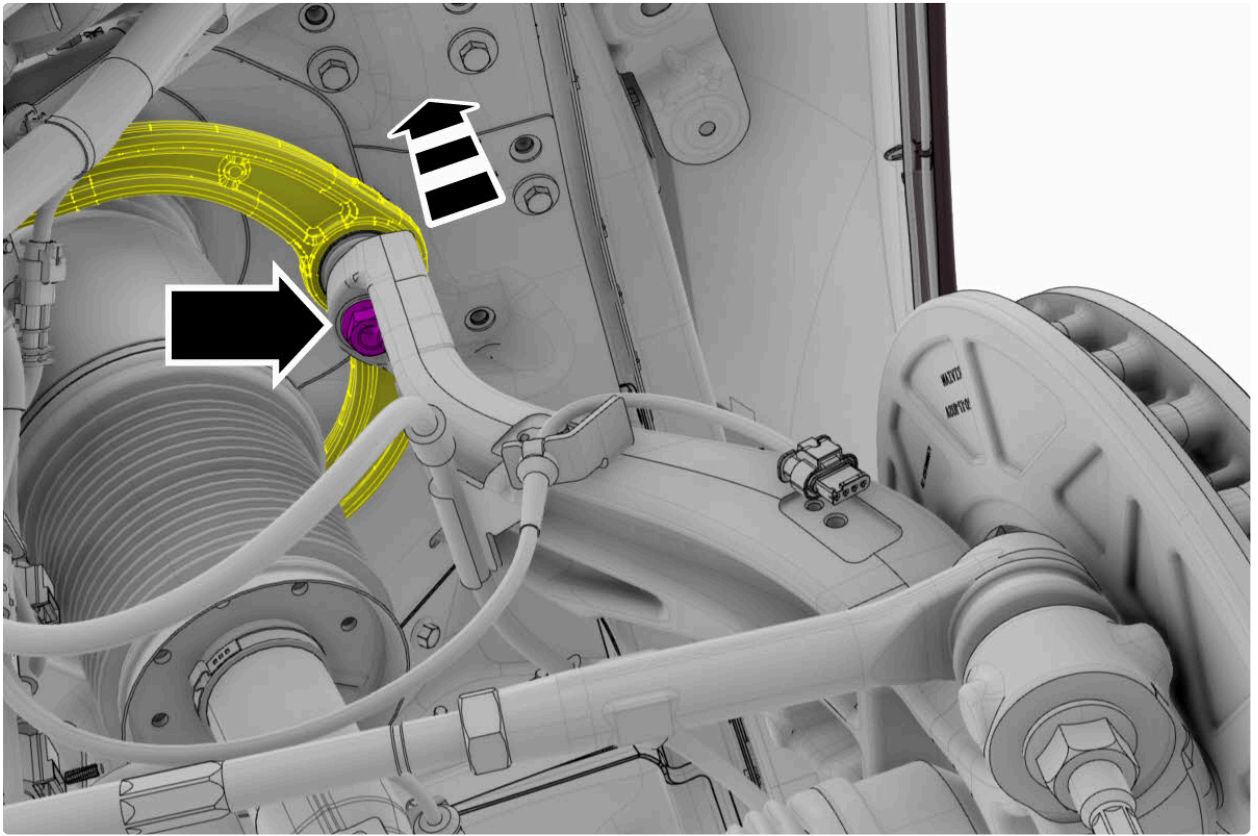
b. Using the ride height torque tool:



**Note:**  
[Refer to the special tool instructions for important information.](#)

c. Using the ball joint separator: Separate the components.

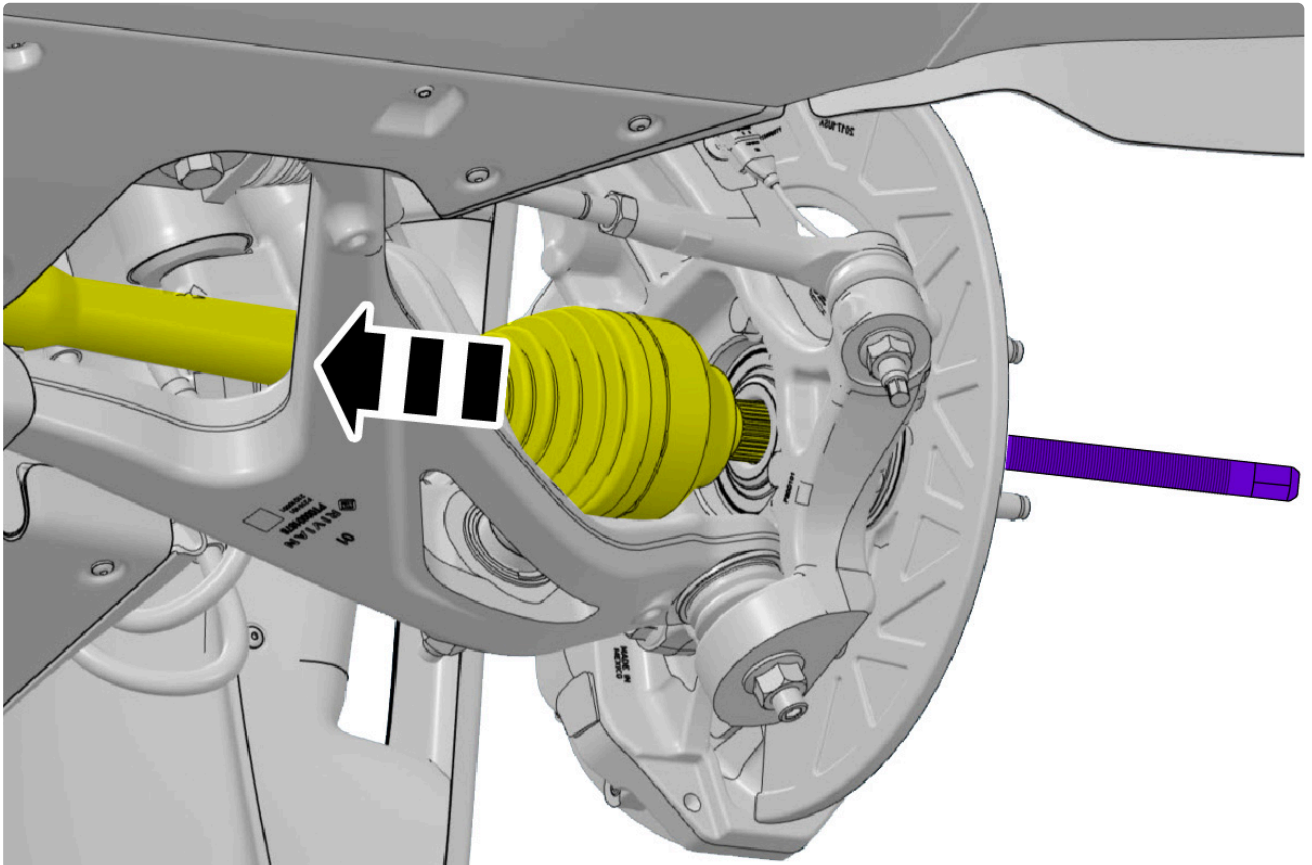
d.



**CAUTION:**  
Non-reusable component(s).

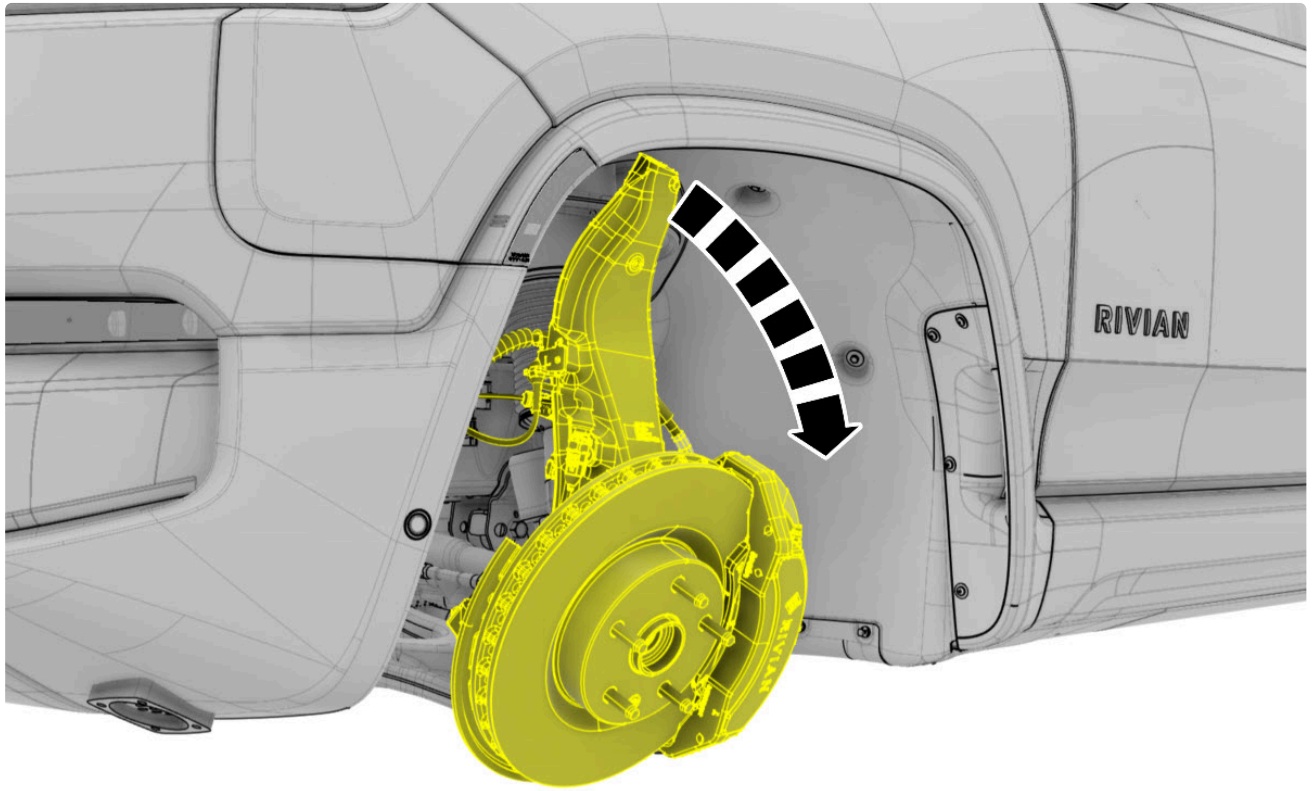
Torque: 120 Nm

9. Using the special tool:

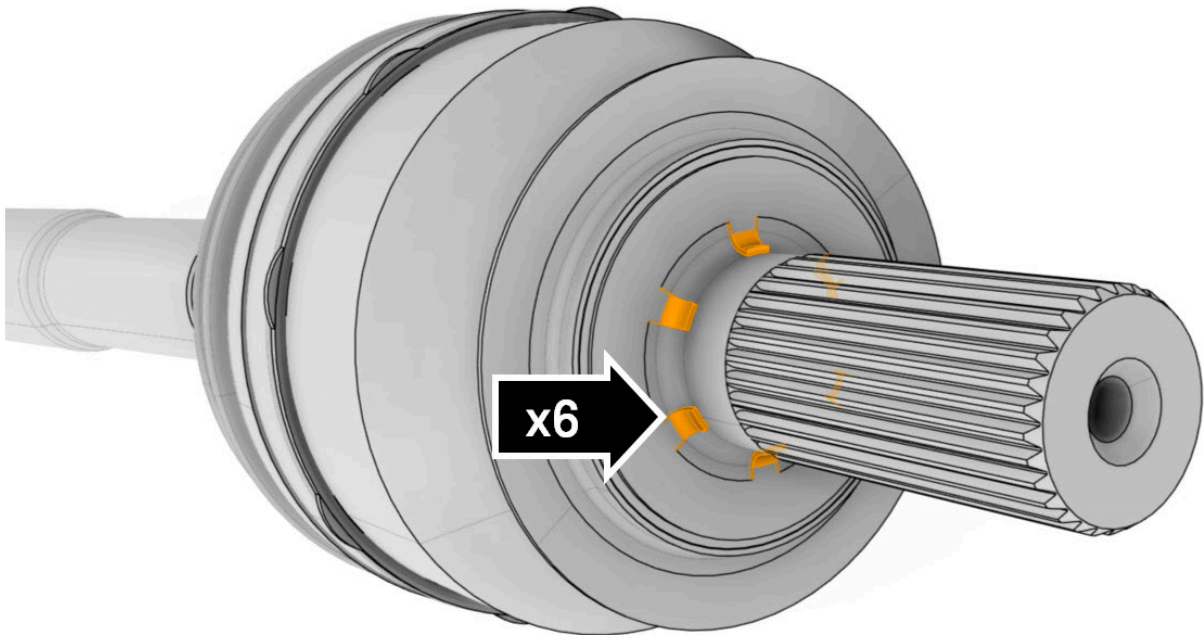


[Refer to the special tool instructions for important information.](#)

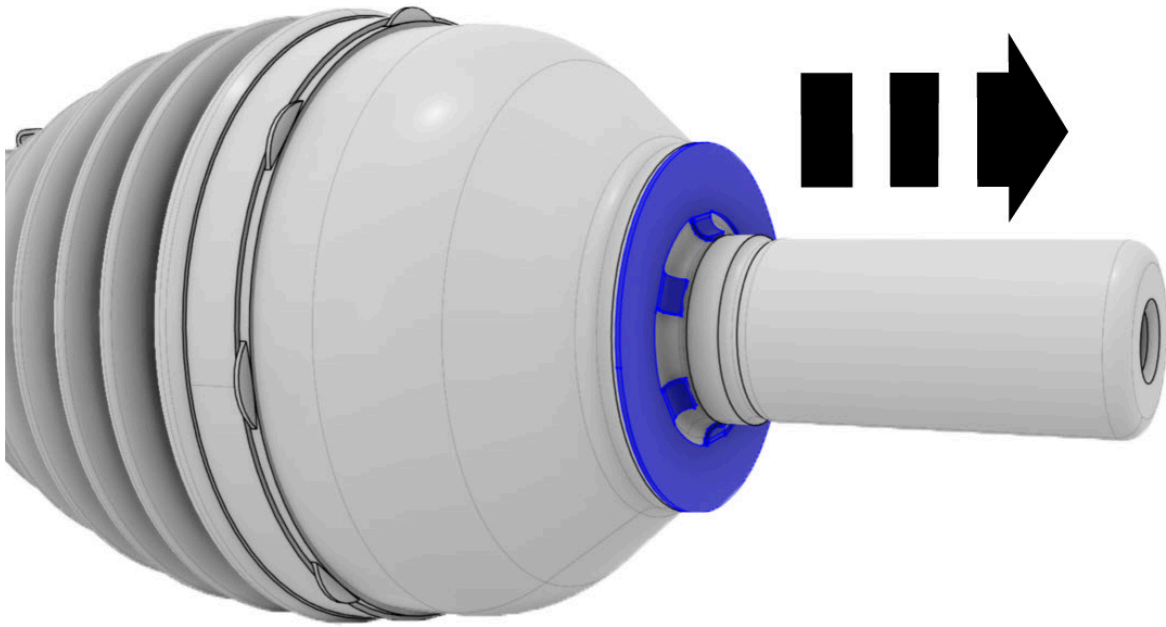
10.



11. Release the highlighted tab(s).

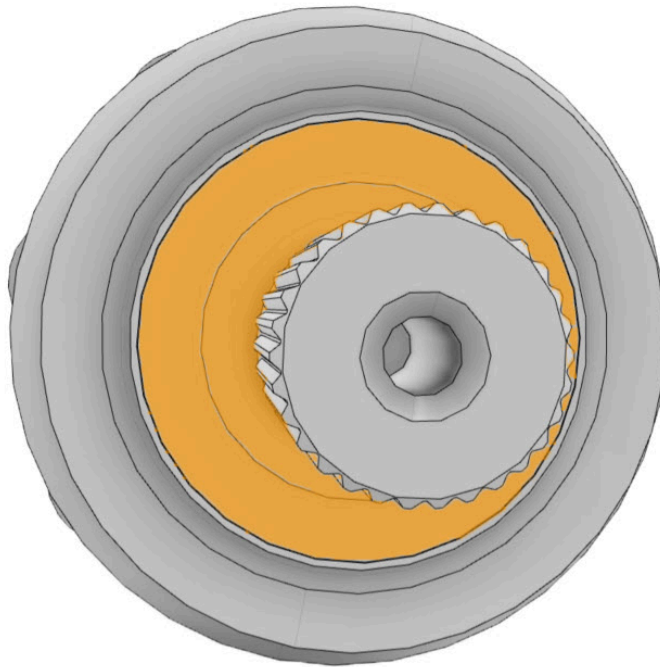


12.

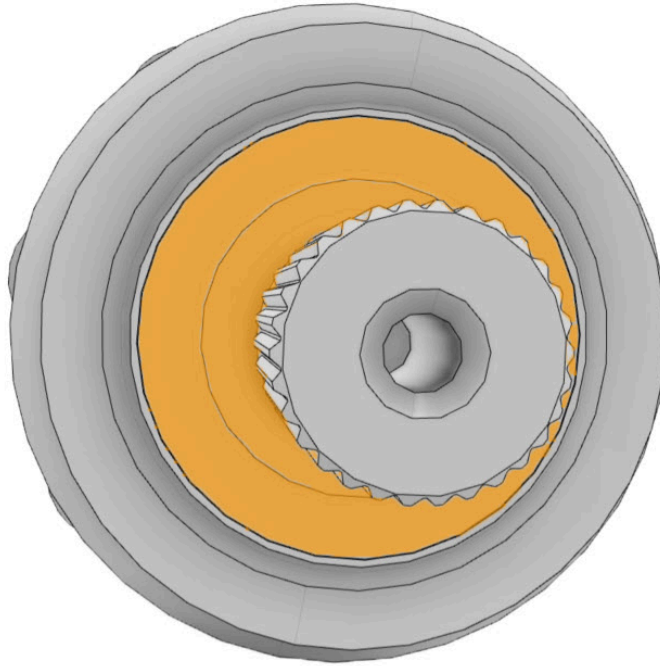


### Installation, Origin

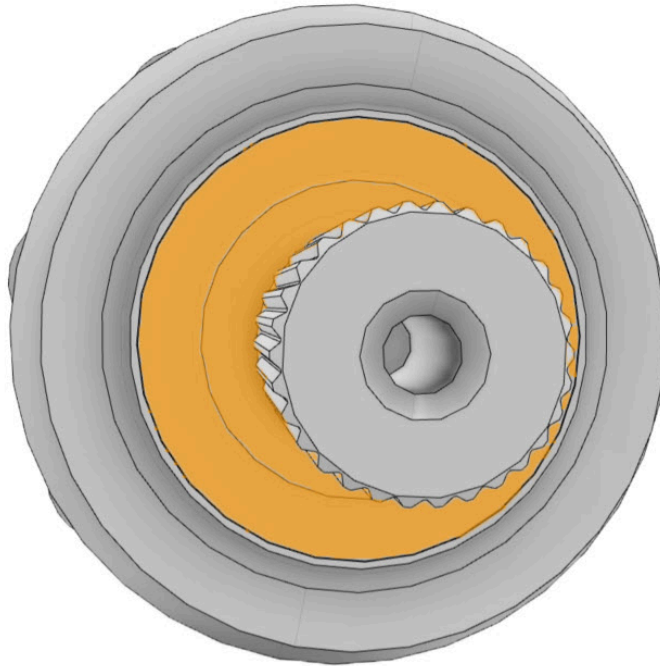
1. Clean the highlighted area(s).



2. Using a nylon mesh scuff pad: Clean the highlighted area(s).



3. Apply grease to the highlighted area(s).

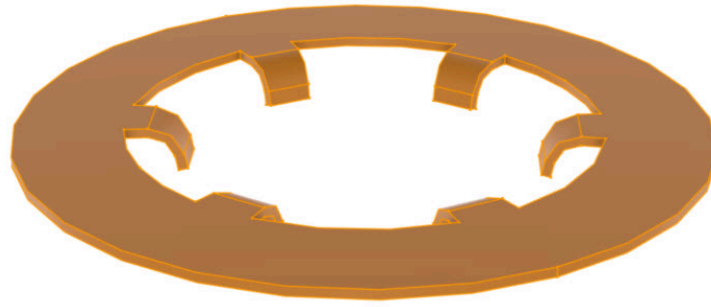


4. Inspect the new component.

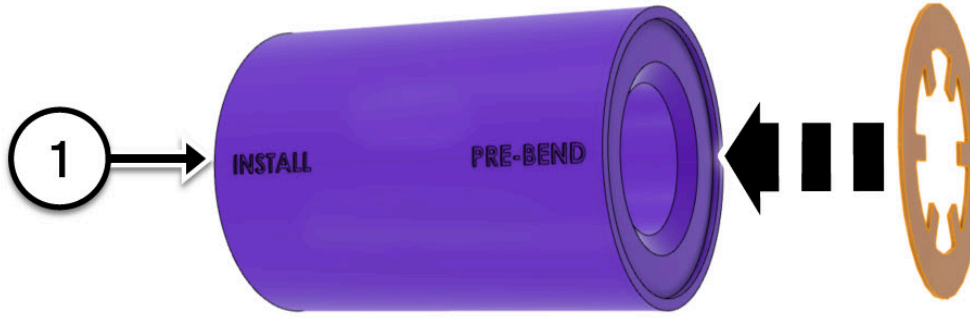
- If the tabs are not bent: Continue to the next step.



- If the tabs are bent: Skip to step 8.

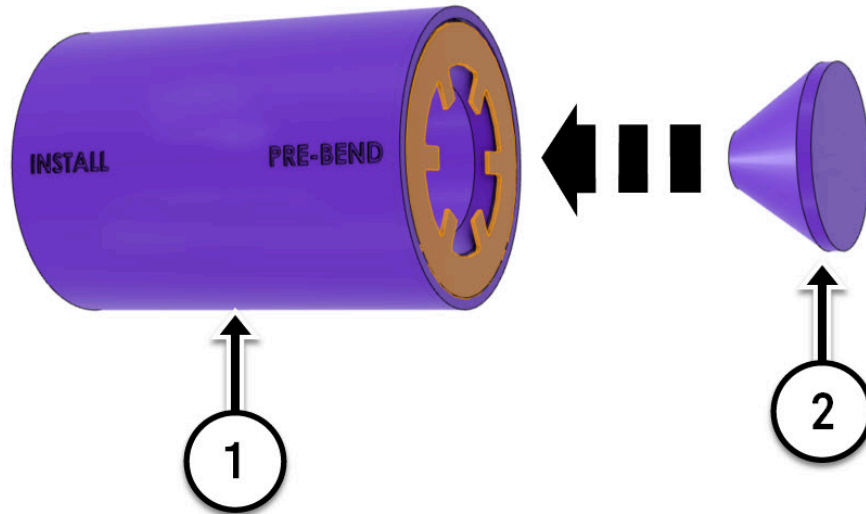


5.



1	TSN01096-203-A
---	----------------

6.



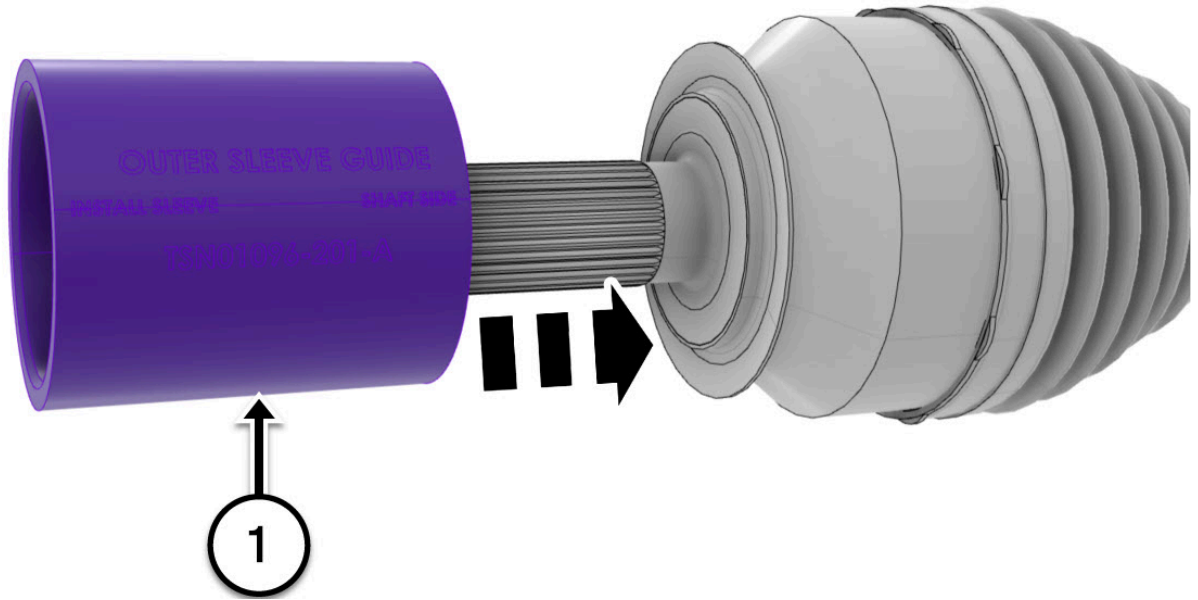
1	TSN01096-203-A
2	TSN01096-202-A

**Tip:**

If necessary: Use a vise or C-clamp to apply pressure.

7. Remove the component from the special tool.

8. Attach the special tool(s).



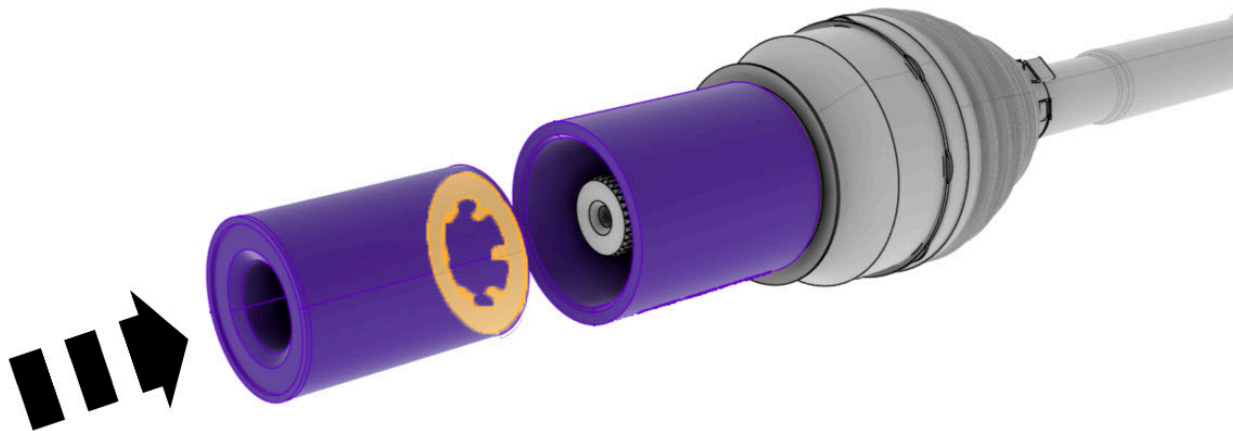
1	TSN01096-201-A
---	----------------

9. Place the component on the tool.

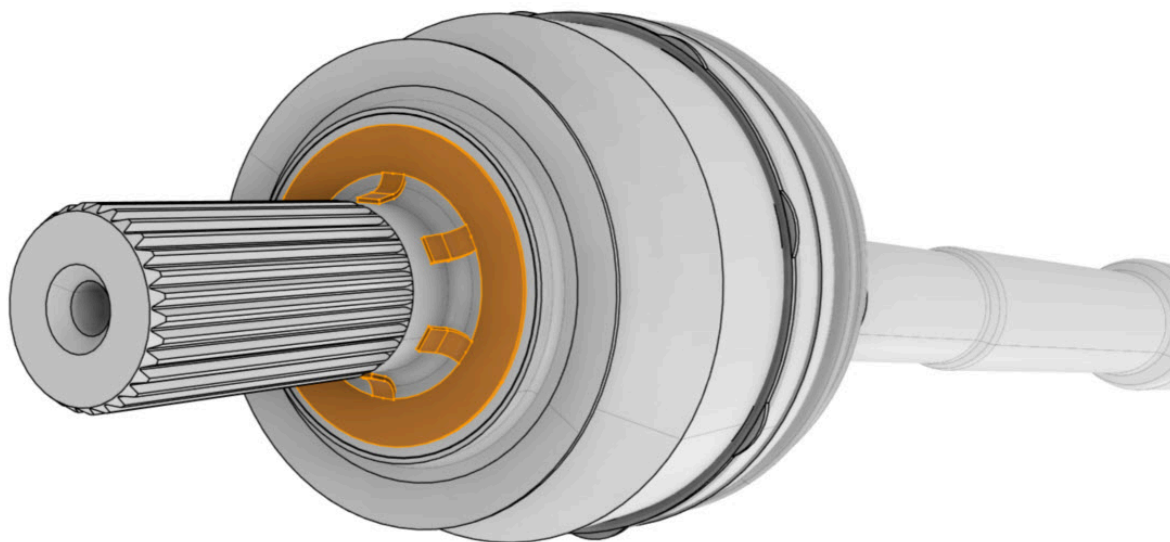


1	TSN01096-203-A
---	----------------

10. Push on the front washer sleeve to fully seat the washer onto the halfshaft. If necessary: Use a mallet.



11. Remove the special tools. Make sure that the washer is fully seated onto the halfshaft. If the washer is not fully seated, repeat steps [8](#) - [10](#).



12. Reinstall all components that were removed for access and replace all non-reusable components.

- **CAUTION:**  
Do not pull the air spring down or inflate the air spring in order to attach any components.
- Use the special tool to position the suspension at ride height before tightening any rubber bushings. Refer to the [special tool instructions](#).
- **Note:**  
When installing the halfshaft bolt:
  - a. Use a new bolt.
  - b. Torque the bolt to 80 Nm.
  - c. Loosen the bolt 1 turn.
  - d. Torque the bolt to 128 Nm.

## Installation, Enduro

1. Clean the highlighted area(s).



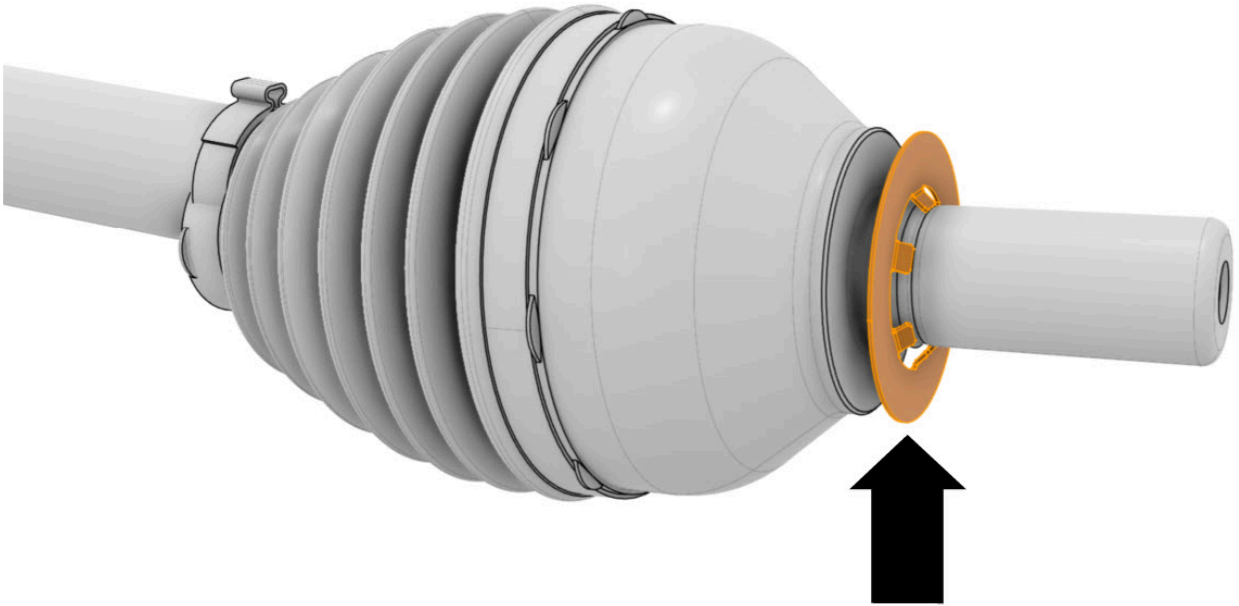
2. Using a nylon mesh scuff pad: Clean the highlighted area(s).



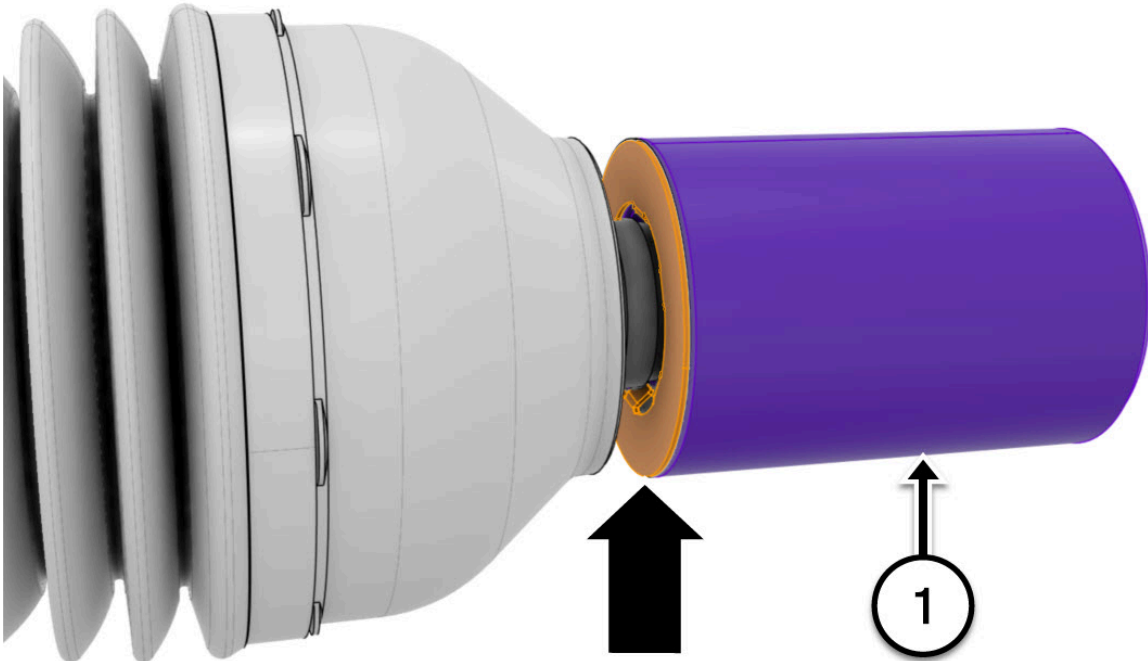
3. Apply grease to the highlighted area(s).



4. Position the component(s) as shown.

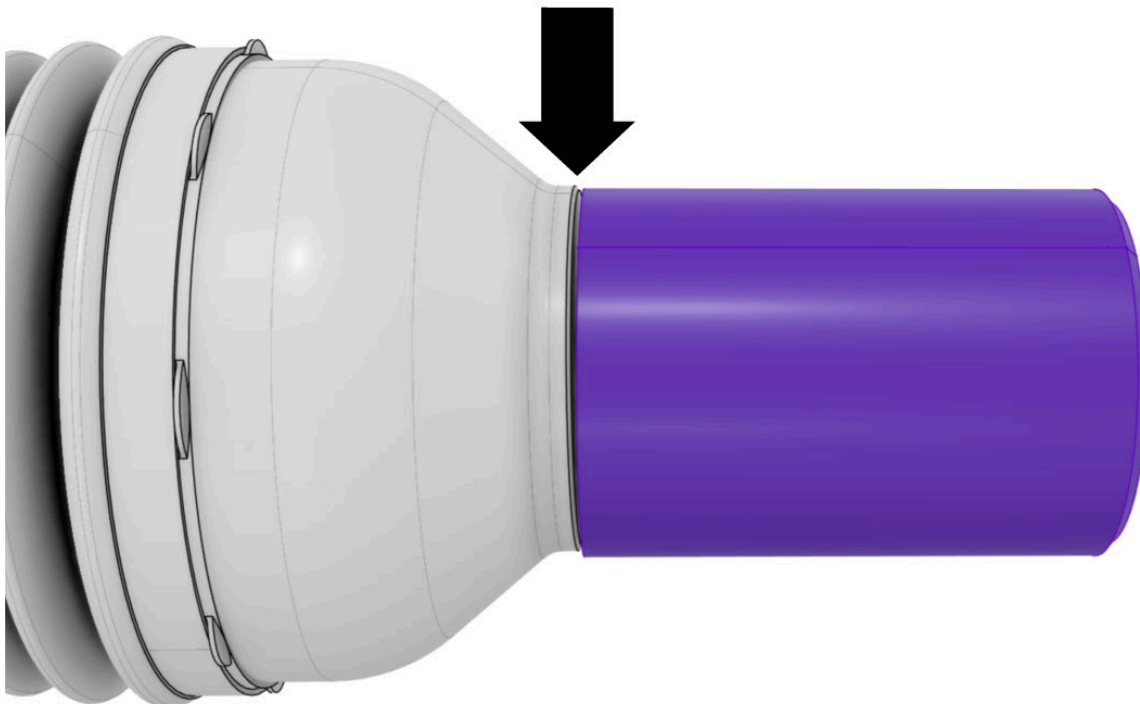
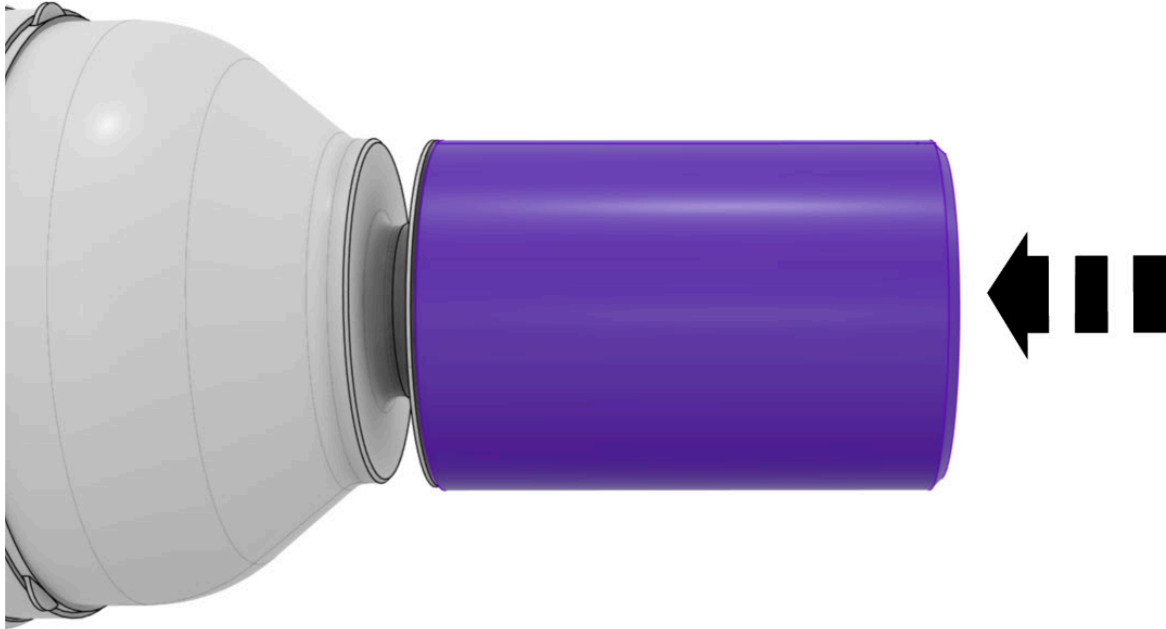


5. Position the tool as shown.



1	TSN01577-200-A
---	----------------

6. Using a dead blow mallet:



7. Remove the special tool. Make sure that the washer is fully seated onto the halfshaft. If the washer is not fully seated, repeat steps [5-6](#).

8. Reinstall all components that were removed for access and replace all non-reusable components.

- **CAUTION:**  
Do not pull the air spring down or inflate the air spring in order to attach any components.
- Use the special tool to position the suspension at ride height before tightening any rubber bushings. Refer to the [special tool instructions](#).
- **Note:**  
When installing the halfshaft bolt:
  - a. Use a new bolt.
  - b. Torque the bolt to 80 Nm.
  - c. Loosen the bolt 1 turn.
  - d. Torque the bolt to 128 Nm.